

# ENERGY DATA

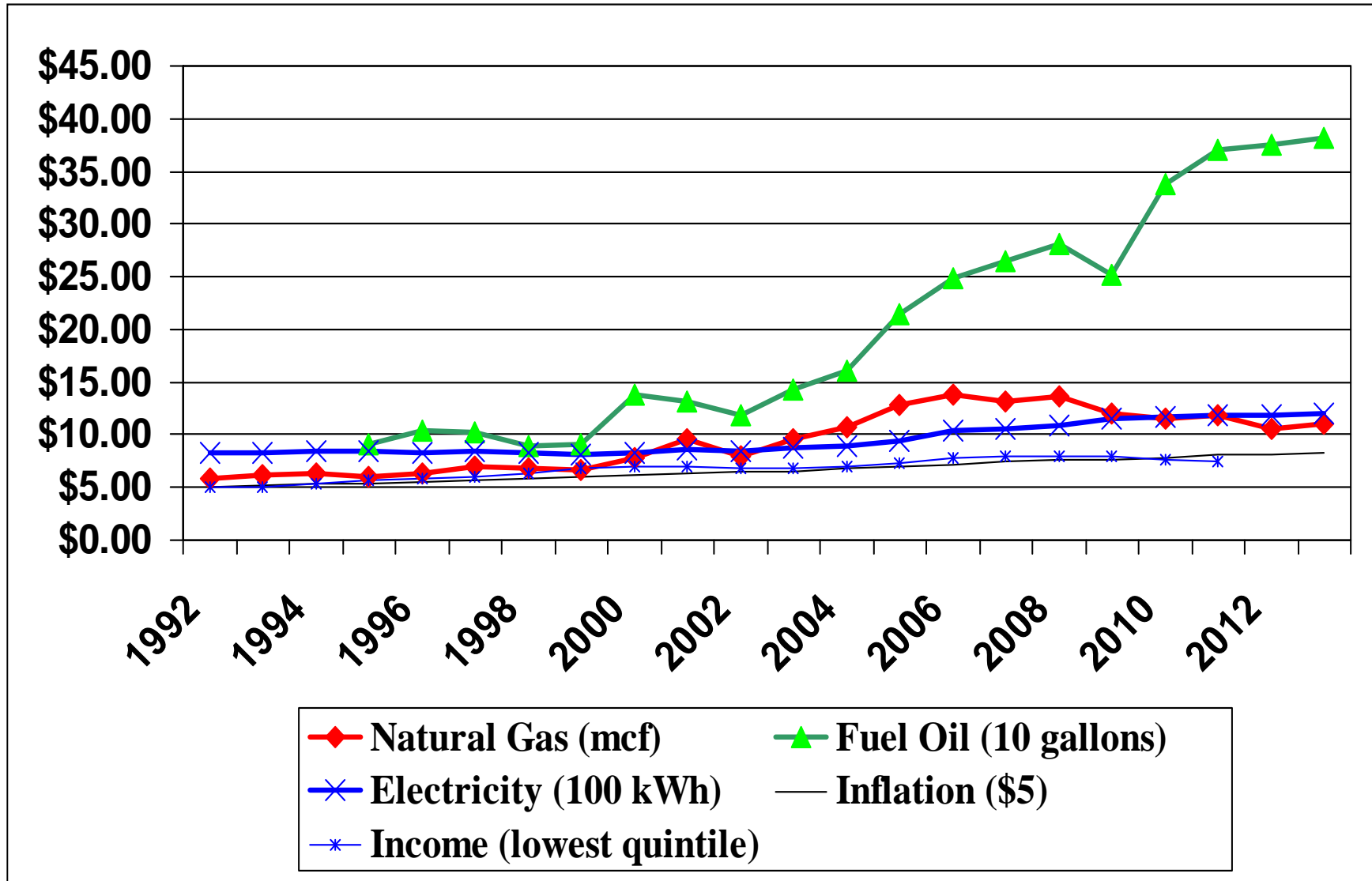
ENERGY PRICES, ENERGY EXPENDITURES,  
AND ENERGY BURDENS

FEBRUARY, 2013

# PRICES BY FUEL TYPE

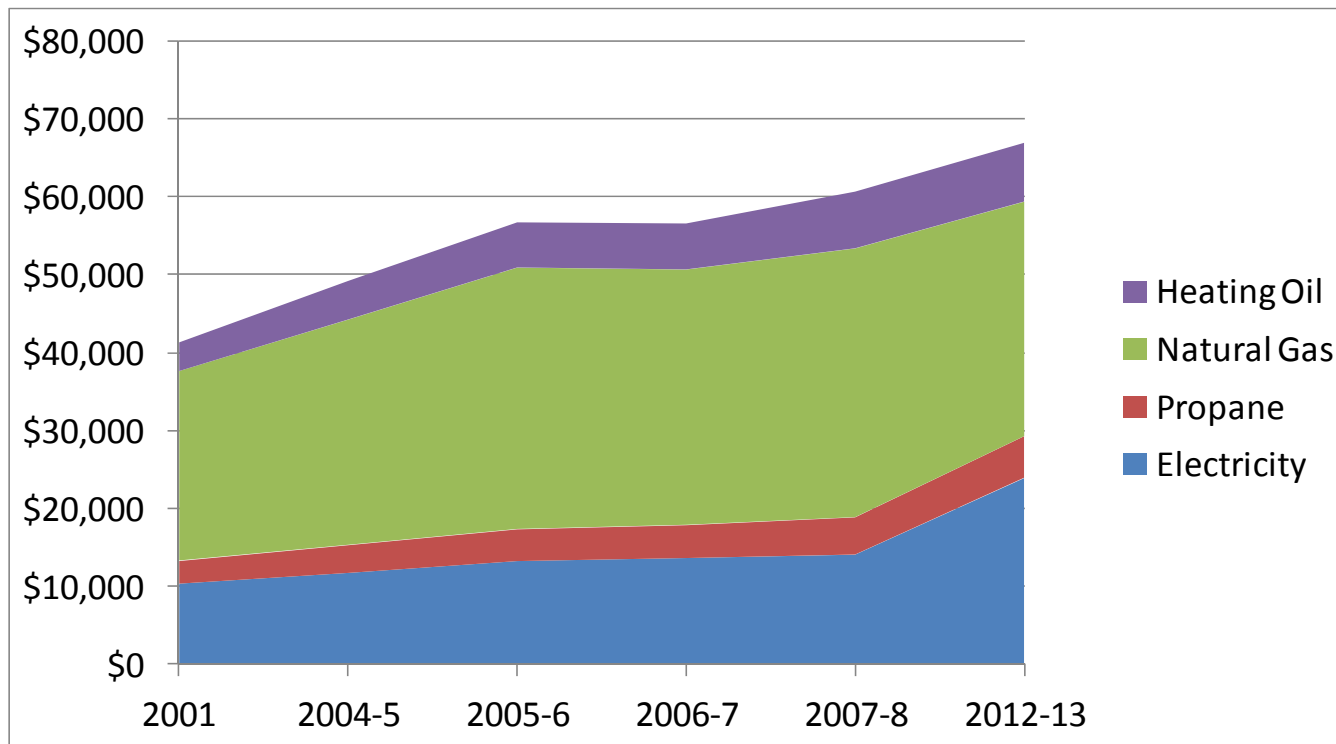
Since 1992

(Nominal dollars)



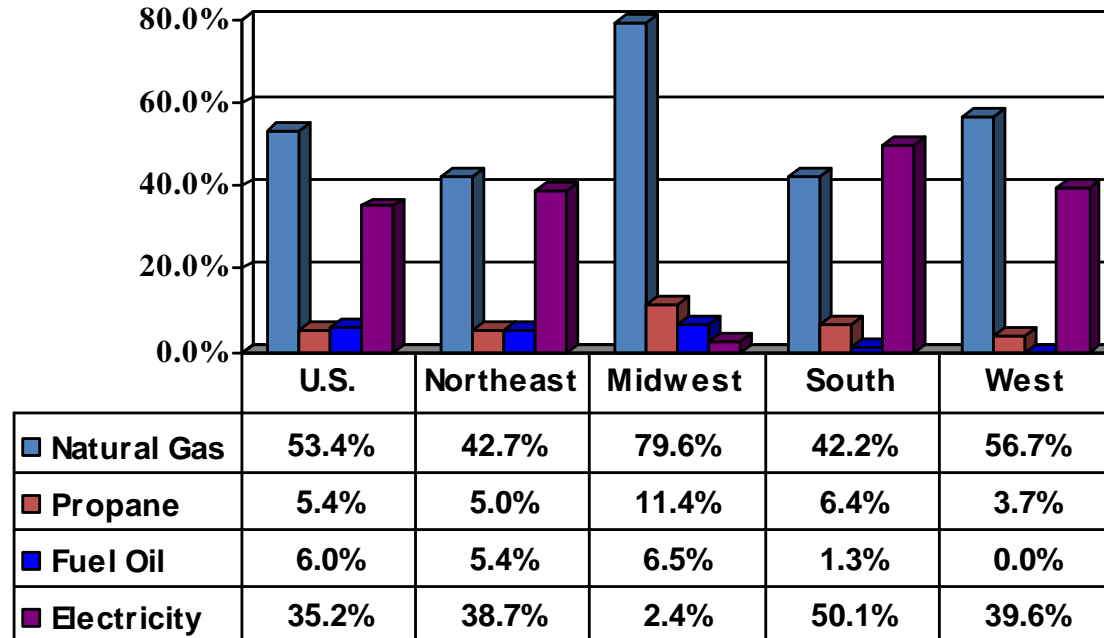
# AGGREGATE RESIDENTIAL ENERGY EXPENDITURES BY LOW-INCOME HOUSEHOLDS Federally Eligible

Millions of dollars



# PRIMARY HEATING FUEL FOR LOW-INCOME HOUSEHOLDS

Percent Of Households At Or Below 150% of Poverty By Region

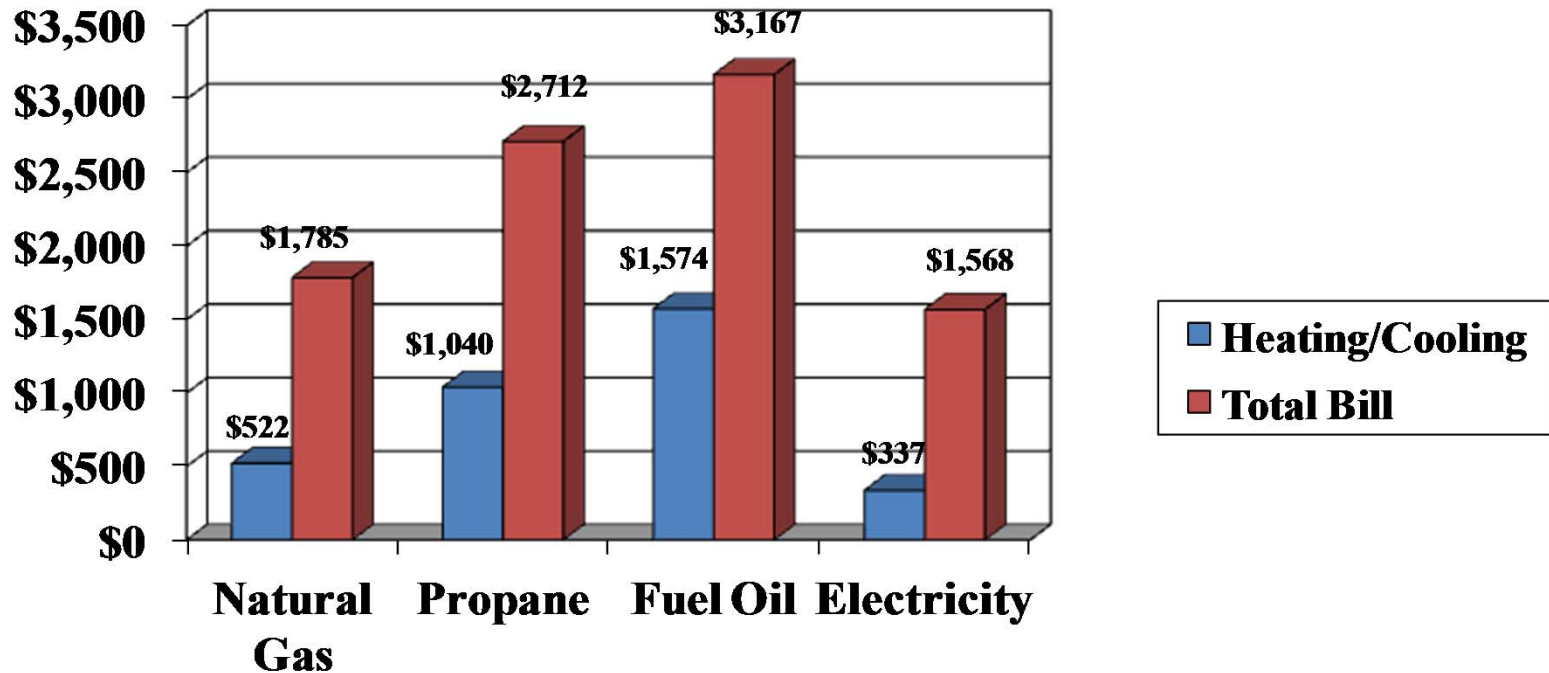


Source: DOE/EIA Residential Energy Consumption Survey for 2001

# EXPECTED ENERGY EXPENDITURES FOR 2012-2013

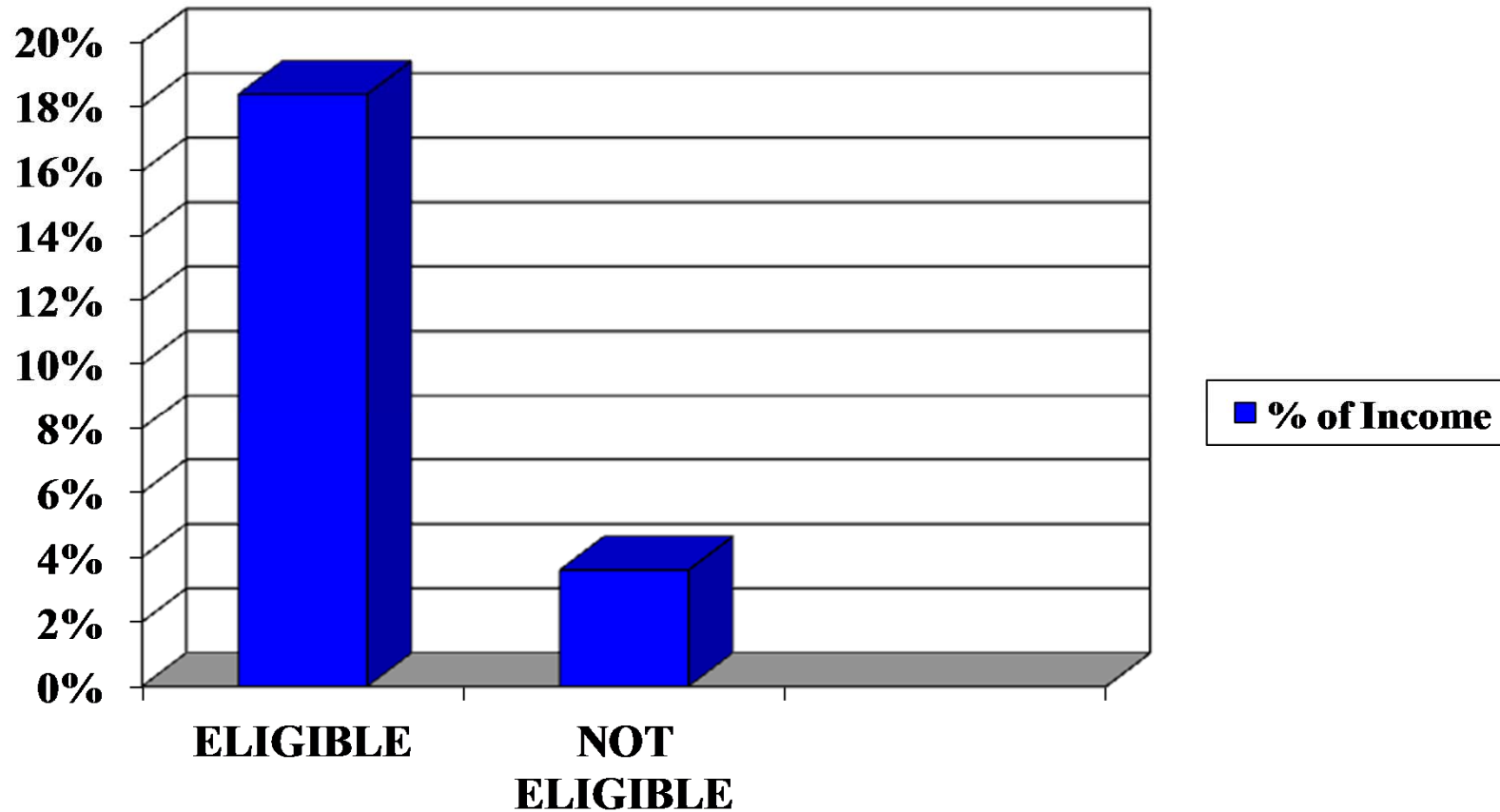
## Low-Income Households

### By Primary Heating Fuel



Source: Tabulation from EIA October 2012 STEO & 2009 RECS

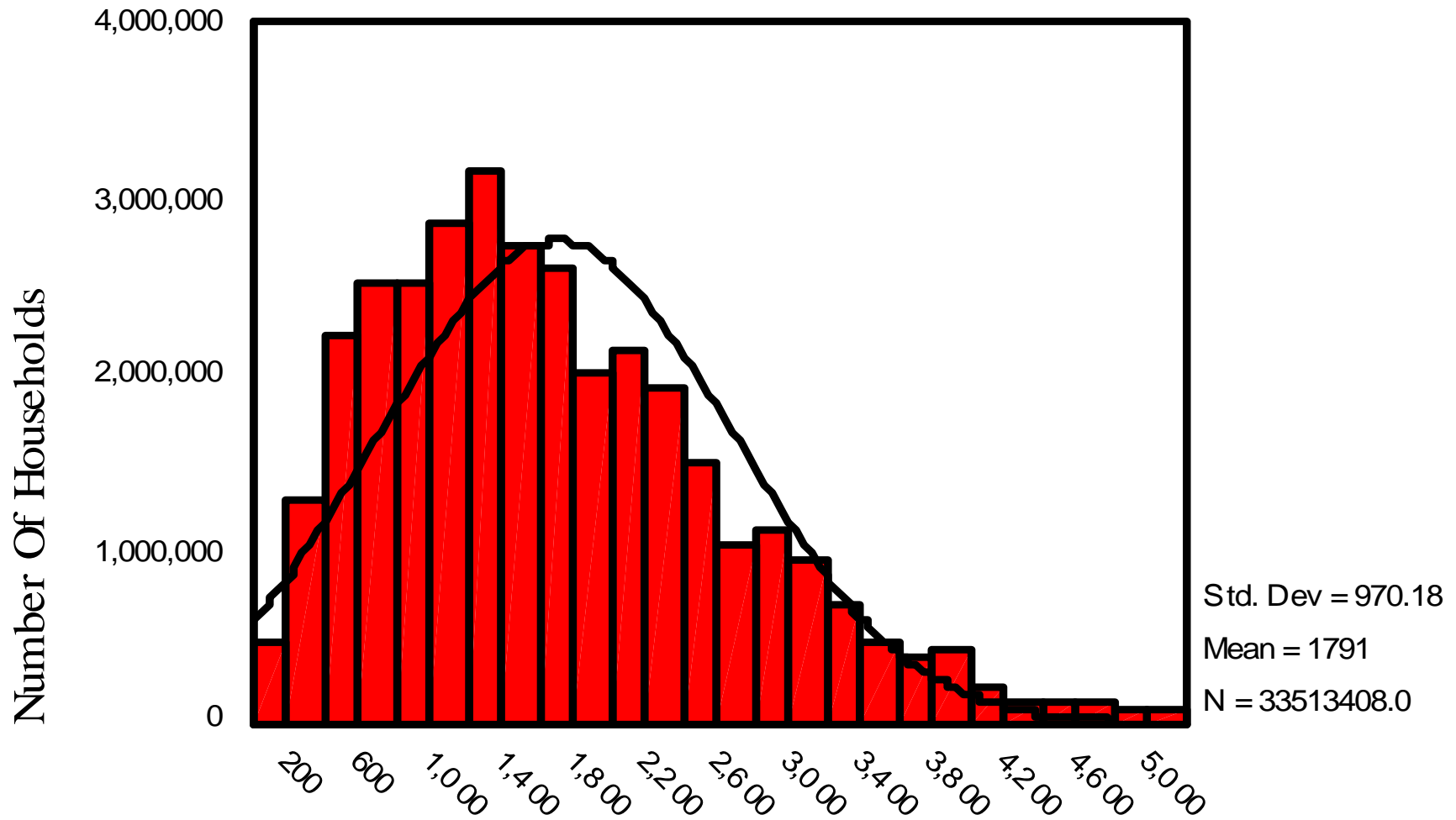
# ENERGY BURDEN BY INCOME GROUP 2012-20123



Source: Tabulation based on EIA STEO October 2012, 2009 RECS

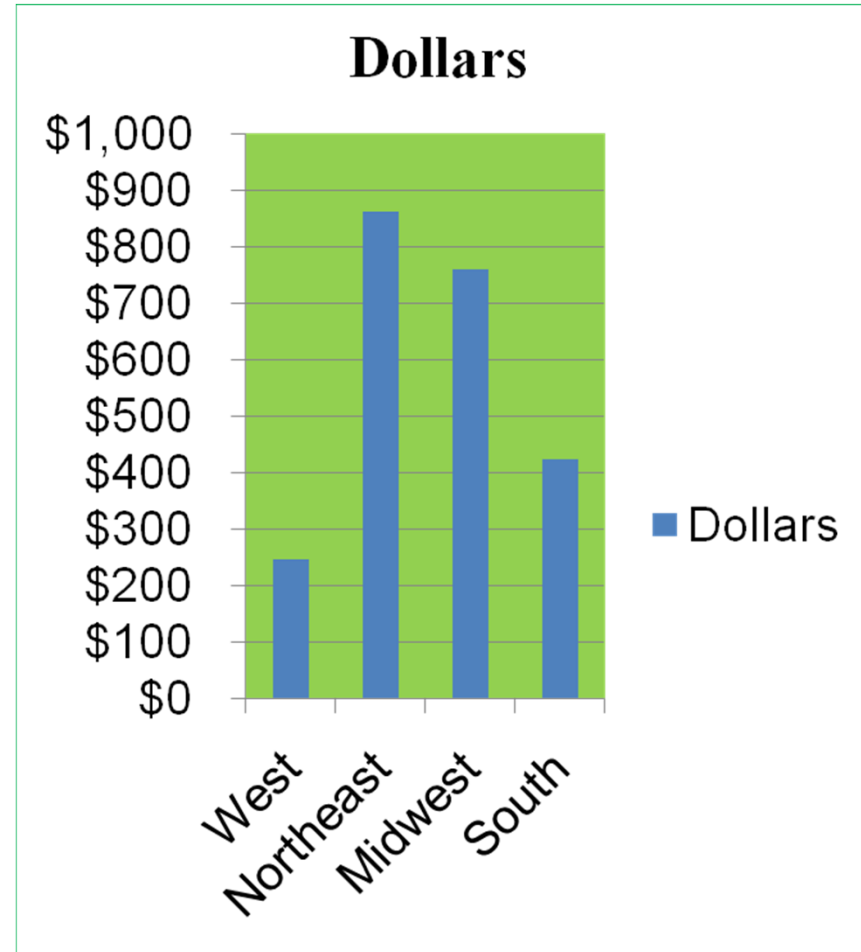
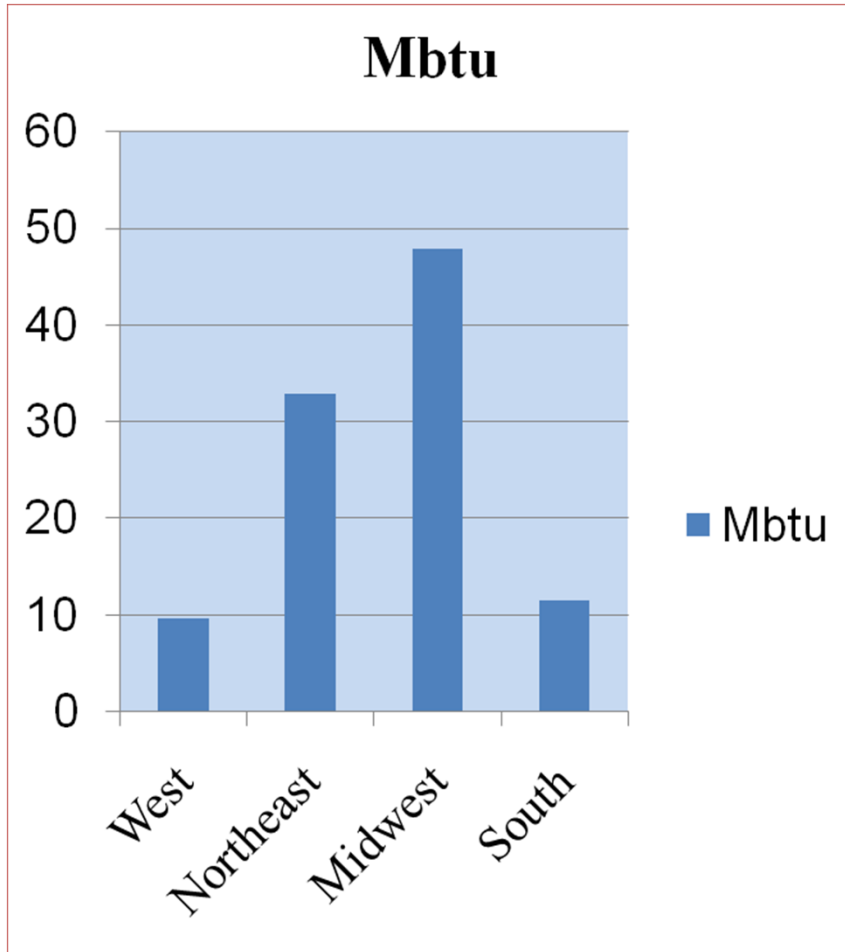
# Distribution Of Low-Income Energy Bills

Estimated for FY 2008



Eligible For LIHEAP With Bills Under \$5,500

# VARIATIONS IN SAVINGS SELECTED STATES



Sources: ORNL Weatherization Assistant Tabulations, EIA Annual Energy Outlook 2010



# ORNL CONTACTS

JOEL EISENBERG- 703 992 6703

[Eisenbergjf@ornl.gov](mailto:Eisenbergjf@ornl.gov)

BRUCE TONN- 865 574 4041

[Tonn.bruce@gmail.com](mailto:Tonn.bruce@gmail.com)

MIKE GETTINGS- 865 574 4506

[g5f@ornl.gov](mailto:g5f@ornl.gov)

MARK TERNES- 865 574 0749

[tmp@ornl.gov](mailto:tmp@ornl.gov)

<http://weatherization.ornl.gov>